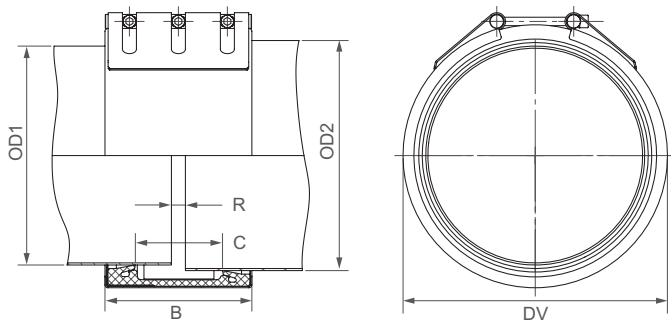


**STRAUB-STEP-FLEX 3 | ø 914.4 - 2032.0 mm**

Components / Materials	W1	W2	W4	W5
Casing	S355MC, hot-dip galvanised	AISI 316 L or similar		AISI 316 L or similar
Bolts	AISI 4135	AISI 4135		A4 - 80
Bars	AISI 12L14, galvanised	AISI 12L14, galvanised		AISI 316 L or similar
Strip insert	AISI 316 L or similar	AISI 316 L or similar		AISI 316 L or similar

**Sealing sleeve EPDM** Temp.: -20 °C up to +100 °C  
 Medium: all qualities of water, waste water, air, solids and chemical products



B ⇨ 210 up to 218 mm  
 DV ⇨ OD2 + 38 mm  
 C ⇨ 127 mm  
 R with strip insert ⇨ 60 mm  
 R without strip insert ⇨ 15 mm

	W2 or W5
	W1, W2 or W5
	W1 or W5
	only in W1 available

OD1 [mm]	OD2 min (OD1 + 10mm) [mm]	OD2 max (OD1 + 30mm) [mm]	PN					
			2.5	6	10	16	20	25
914.4	924	934						
1016.0	1026	1046						
1117.6	1127	1147						
1219.2	1229	1249						
1320.8	1331	1351						
1422.4	1432	1452						
1524.0	1534	1554						
1600.0	1610	1630						
1625.4	1635	1655						
1727.2	1737	1757						
1828.8	1839	1859						
1930.4	1940	1960						
2032.0	2042	2062						

Continuously variable intermediate sizes from 914.4 to 2032.0 mm are available

**Remarks:**

- Follow fitting instructions
- PN = working pressure considering the application loads
- Test pressure = PN x 1.5 (for example industry, water supply etc.)
- Stainless steel strip insert included
- Additional sealing sleeves, pressure and temperature ranges on request