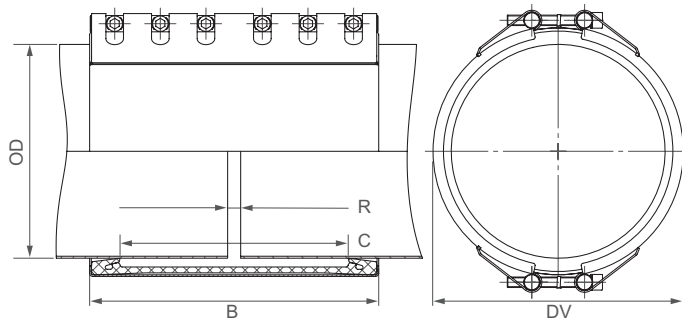


# STRAUB-OPEN-FLEX 4 | $\varnothing$ 323.9 - 4064.0 mm

| Components / Materials     | W1  | W2 | W4 | W5                           |
|----------------------------|---|----|----|------------------------------|
| Casing                     | S355MC, hot-dip galvanised  |    |    | S32101                       |
| Bolts                      | AISI 4135   |    |    | A4 - 80                      |
| Bars                       | AISI 12L14, galvanised  |    |    | AISI 316 L or similar        |
| Strip insert               | AISI 301 / HDPE   |    |    | AISI 316 L or similar / HDPE |
| <b>Sealing sleeve EPDM</b> | Temp.: -20°C up to +100°C<br>Medium: all qualities of water, waste water, air, solids and chemical products |    |    |                              |
| <b>Sealing sleeve NBR</b>  | Temp.: -20°C up to +80°C<br>Medium: water, gas, oil, fuel and other hydrocarbons                            |    |    |                              |



B  $\Rightarrow$  443 up to 444 mm  
 DV  $\Rightarrow$  OD + 48 mm  
 C  $\Rightarrow$  350 mm  
 R with strip insert  $\Rightarrow$  200 mm  
 R without strip insert  $\Rightarrow$  20 mm

|  |                      |
|--|----------------------|
|  | W1 or W5             |
|  | only in W5 available |



| OD<br>[mm] | Clamping range<br>[mm] | PN  |   |    |    |    |    |
|------------|------------------------|-----|---|----|----|----|----|
|            |                        | 2.5 | 6 | 10 | 16 | 20 | 25 |
| 323.9      | 318 - 329              |     |   |    |    |    |    |
| 355.6      | 350 - 362              |     |   |    |    |    |    |
| 406.4      | 402 - 411              |     |   |    |    |    |    |
| 457.2      | 453 - 462              |     |   |    |    |    |    |
| 508.0      | 504 - 514              |     |   |    |    |    |    |
| 558.8      | 553 - 564              |     |   |    |    |    |    |
| 609.6      | 604 - 615              |     |   |    |    |    |    |
| 655.0      | 651 - 660              |     |   |    |    |    |    |
| 711.2      | 705 - 717              |     |   |    |    |    |    |
| 762.0      | 756 - 768              |     |   |    |    |    |    |
| 812.8      | 807 - 819              |     |   |    |    |    |    |
| 914.4      | 908 - 920              |     |   |    |    |    |    |
| 1016.0     | 1010 - 1022            |     |   |    |    |    |    |
| 1117.6     | 1111 - 1125            |     |   |    |    |    |    |
| 1219.2     | 1213 - 1226            |     |   |    |    |    |    |
| 1320.8     | 1314 - 1328            |     |   |    |    |    |    |
| 1422.4     | 1416 - 1429            |     |   |    |    |    |    |
| 1524.0     | 1517 - 1532            |     |   |    |    |    |    |
| 1600.0     | 1593 - 1608            |     |   |    |    |    |    |
| 1625.0     | 1619 - 1633            |     |   |    |    |    |    |
| 1727.2     | 1720 - 1735            |     |   |    |    |    |    |
| 1828.8     | 1822 - 1837            |     |   |    |    |    |    |
| 1930.4     | 1923 - 1938            |     |   |    |    |    |    |
| 2032.0     | 2025 - 2040            |     |   |    |    |    |    |
| 2268.0     | 2261 - 2276            |     |   |    |    |    |    |
| 2540.0     | 2533 - 2548            |     |   |    |    |    |    |
| 2794.0     | 2796 - 2801            |     |   |    |    |    |    |
| 3048.0     | 3041 - 3056            |     |   |    |    |    |    |
| 3302.0     | 3293 - 3311            |     |   |    |    |    |    |
| 3556.0     | 3544 - 3566            |     |   |    |    |    |    |
| 3810.0     | 3801 - 3819            |     |   |    |    |    |    |
| 4064.0     | 4055 - 4073            |     |   |    |    |    |    |

**CONTINUOUSLY VARIABLE INTERMEDIATE SIZES FROM 323.9 TO 4064.0 mm ARE AVAILABLE**

## Remarks:

- Follow fitting instructions
- PN = working pressure considering the application loads  
Test pressure = PN x 1.5 (for example industry, water supply etc.)
- Strip inserts included
- Additional sealing sleeves, pressure and temperature ranges on request
- From  $\varnothing$  3048 in 3-part design